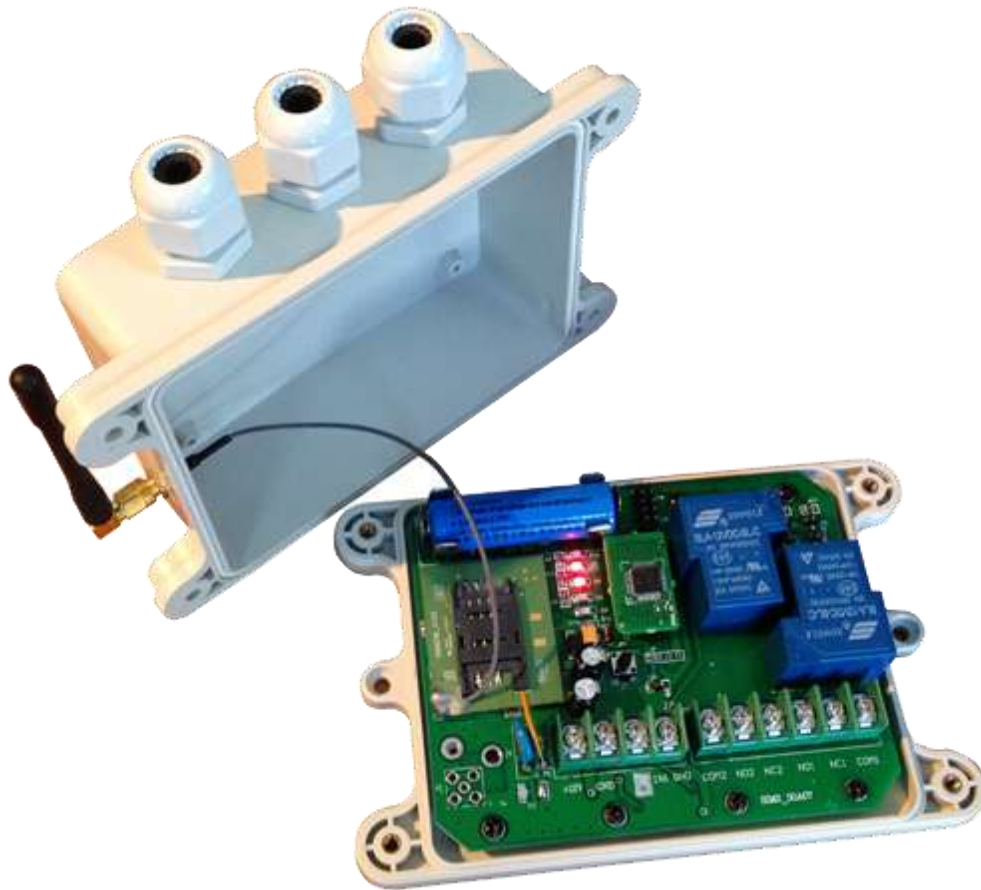


GSM-WEEKLY

INSTALLATION MANUAL



Copyright: SHANGHAI WAFER MICROELECTRONICS CO.,LTD

GSM-WEEKLY VERSION 1.0-1407

GSM-WEEKLY

REMOTE CONTROL

Installation and Operation Instructions

IMPORTANT! – This instruction manual should be read thoroughly and understood Before installation and operation of this equipment. Failure to do so may result in serious bodily injury!

IMPORTANT! – The electronic components contained within the GSM-WEEKLY housing are sensitive to Electrostatic Discharge (ESD). It is important to make sure that you employ proper handling procedures that will minimize the possibility of ESD damaging the circuit board.



If you are unsure how to install your GSM-WEEKLY or insert your network SIM card please refer these tasks to a Qualified Person.

GSM-WEEKLY Description:

The GSM-WEEKLY is a wireless remote On/Off switch that can be controlled through a connection to the GSM cell phone network. The connection to the GSM cell network is accomplished by purchasing a SIM card and Pay-As-You-Go (PAYG) plan from your local wireless provider. Once the SIM card is installed in the SIM card holder on the top of the GSM module of your GSM-WEEKLY will have its own unique telephone number.

The unit is activated by an incoming call to its cell phone number. The unit cannot answer a voice call but in sensing the call its logic will activate one or both of the output relays in a pre-programmed sequence. Because the unit doesn't answer the call, the activation of the relays does not incur any call charges to the PAYG plan or to the caller.

Alternately, the individual relays can be activated by sending SMS text messages to the unit's phone number. Similarly, the unit is programmed by sending specific SMS text commands.

The GSM-WEEKLY unit controls 2 independent switches. You can therefore control 2 separate devices from one unit. An example would be in a aircraft hangar where the battery charger and engine pre-heater are turned on in sequence to prepare an aircraft for a flight.

An on board clock and Weekly timer with 16 time segments to enable the relays to be switched on and off for a set time,

GSM-WEEKLY Features

- ✓ Quad band - will work anywhere in the world
- ✓ Secure caller ID allows controlled access of up to 99 authorized users, the users telephone numbers are added to the white list, only the numbers in the white list are able to activate the GSM-WEEKLY, users can be added and deleted as required using text messages
- ✓ There are no call costs incurred when calling the unit, it will recognise an authorized telephone number calling it and reject the call without answering
- ✓ The GSM-WEEKLY has two independent relays with normally open and normally closed contacts, these can be programmed to switch on for between 1 second and 18 hours, in addition a delay time between relay 1 and 2 switching can be set, programming is achieved by sending text messages to the GSM-WEEKLY, once programmed you simply call the unit to activate the relay operations already programmed
- ✓ The programmed operation can be temporarily overridden and the relays switched on for up to 18 hours by sending the unit a text message command, a confirmation text will be returned when the relay(s) is switched on and another when it is switched off
- ✓ The relays can be permanently switched on or off by sending the GSM-WEEKLY a text message, again a confirmation text will be returned
- ✓ On board clock and Weekly timer with 16 time segments to enable the relays to be switched on and off for a set time, for example relay1 switches on at 15:00 (3:00pm) for 1200 seconds (Monday to Friday) and off at 15:20 (3:20pm), once set the timer function repeats every day from Monday to Friday until reset. The caller ID and override functions are disabled when the 24 hour timer is active.
- ✓ One on board alarm input port for switch type input
- ✓ Any relay working status change, power status change, alarm input change can be reported to the alarm phone number
- ✓ Easy replaced Rechargeable lithium battery. Already have the self-protection circuit on board for the lithium battery. No need to order special rechargeable lithium battery.

GSM-WEEKLY Requirements

The GSM-WEEKLY cellular switch requires the purchase of a mobile phone SIM card and a Pay-as-You-Go card with enough credit to cover the cost of the SMS messages required to program the unit.

We strongly recommend that if you are using a PAYG card that you choose to automatically "Top-Up" the card. Alternatively, there are cards with carriers such as AT&T in the U.S. and Rogers in Canada that are good for a year. Ensure that when you purchase the SIM and PAYG cards that there is no need for activation by phone, that voice mail is deactivated and that the PIN request is disabled from the SIM card before inserting it in the GSM-WEEKLY. You may have to check for these choices when you register on the company's web site.

If the PIN request mode is not disabled, the GSM-WEEKLY will not work and you will have to contact the service provider to reset the PIN using PUK Code. The SIM card should now be ready to insert into the SIM Card Carrier located on the GSM-WEEKLY GSM module board.

GSM-WEEKLY Battery selection

For GSM-WEEKLY board, please select the rechargeable lithium battery with AA size

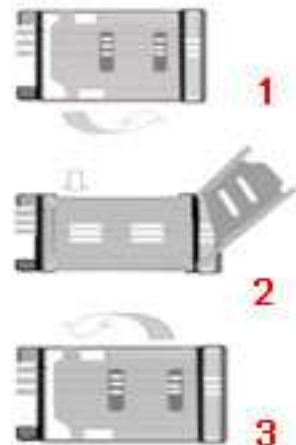
Battery voltage is 3.7V and battery capacity is better more than 1200mAh

Our board already has the on board lithium battery protection circuit.



GSM-WEEKLY Installation of the SIM card

1. Remove your GSM-WEEKLY unit from the packaging and make sure that there has been no shipping damage.
2. Ensure that the unit is NOT plugged into any power source.
3. Remove the 4 screws from the cover and set them aside.
4. Read the safety warning stickers on the sides of the box before slitting them along the joint where the lid meets the body of the box. Remove the box lid and set aside.
5. Check that all of the components in the box are secure and have not loosened as a result of rough handling during shipping.
6. Before touching the circuit board it is best to place some sort of ground strap between yourself and the ground to dissipate any static electricity. Better yet, ground yourself to the board as well.
7. Look along the top left hand of the circuit board for black SIM card carrier. Slip the holder will release the SIM card carrier. Carefully insert the SIM card with the right direction.
8. Put the Rechargeable lithium battery on to the Battery holder with the **Correct polarity**
9. Put the lid back on the box and tighten it back down with the 4 screws.
10. According to the manual and your project to connect the wires correctly. that must be connected with the right qualified electrician.



Placement of the GSM-WEEKLY

1. Consideration must be given before mounting your GSM-WEEKLY as to where the best cellular signal strength is going to be. Metal buildings are very good at blocking cellular signals. The unit is supplied with 2 different antennae for this purpose. This may take some trial and error using the "CSQ" command. The optimum situation has the remote antenna located high on an outside wall where it has the best chance of receiving a good signal.
2. The GSM-WEEKLY housing has mounting flanges on the top and bottom so that it can be conveniently secured with 4 screws to a number of surfaces. The unit can be mounted in any orientation.
3. Install your chosen antenna to the gold colored coaxial input on the side of the box and orientate the antenna for best signal strength.

GSM-WEEKLY Specifications:

Power supply	DC 12V
Power consumption	Maximum during communication 500mA, typically 70mA
Relay contacts	2 x 230V @ 30 Amp, Normally Open and Normally Closed contacts (Form C), switching capacity 2.5Kw
GSM Bands	GSM 850/900/1800/1900 MHz
Operating temperature	-20°C to 60°C
Physical size	130 x 100 x 50 mm, 5 x 4 x 2 inches
Weight	250 grams
Protection	IP 65
Approvals	CE

GSM-WEEKLY WORKING MODE Reference

GSM-WEEKLY can work at three mode:

DIAL WORKING MODE: ([Momentary pulse mode and Ratchet relay mode](#))

Dial working mode has mode0 and mode1, when mode1, that is only for OUTPUT1

We can use the phone call to control the output easily. Device would work with the parameters of GOT1, GOT2 and GOTS. When the device pickup the phone calling, then the OUTPUT1 would be toggled to work for GOT1 timer and also after the GOTS delay timer, then the OUTPUT would start to be toggled to work for GOT2 timer.

You also can use the “#PWD123456#MODE1” to setup the Dial working mode to mode1 (Ratchet relay mode). When we call the device, then the OUTPUT1 would be switched and when you call the device again, then the OUTPUT1 would be switched again.

RLY and RLOP WORKING MODE:

We can use the RLY to toggle the relay output to working or use the RLOP to switch the relay output. When RLY mode is working, then DIAL mode would be inhibited

SMW WEEKLY WORKING MODE:

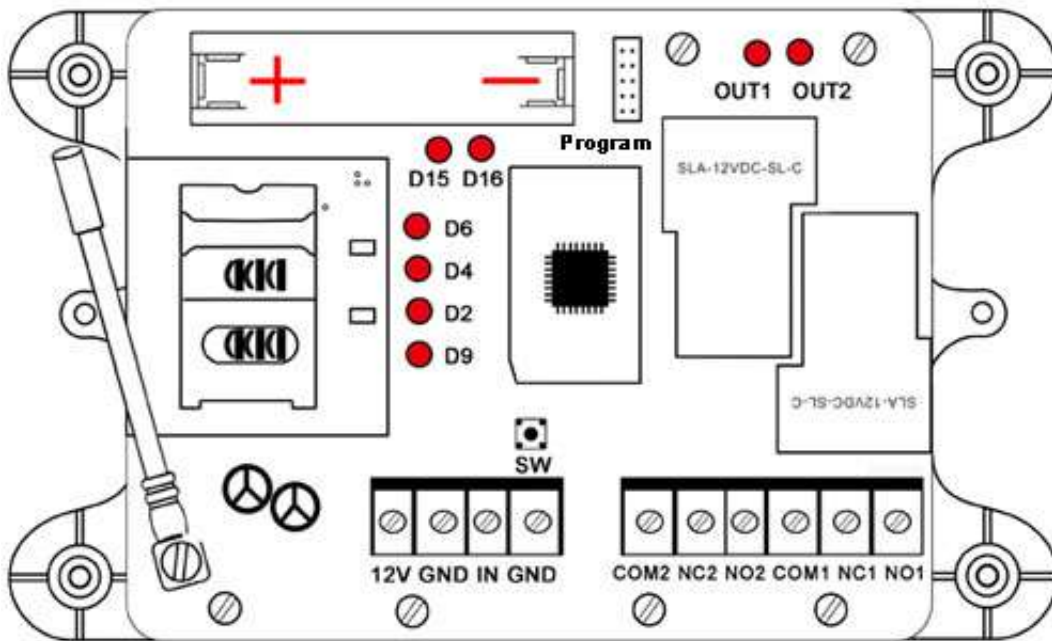
We can use the SMW to arrange the relay working at scheduled time period

When SMW mode is set to ON, then RLY and DIAL would be inhibited, also the RELAY would be reset to OFF status to start the SMW function.

When SMW mode is working, then RLY and DIAL mode would be inhibited

So in our design the SMW working mode has the highest priority.

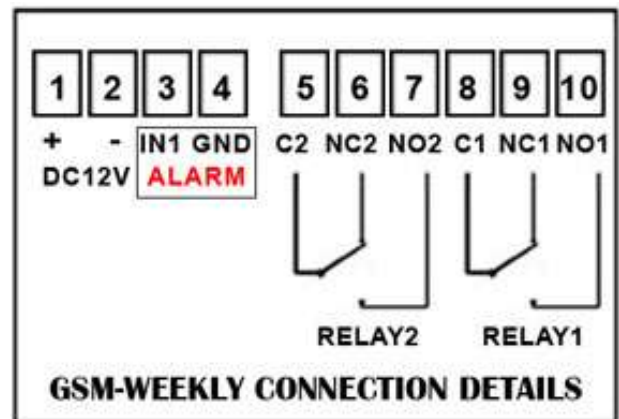
GSM-WEEKLY Hardware and connection details:



SW: Teach button: For fast WHL number program

LEDs:

- D6: GSM net working status LED
- D4: MCU working LED
- D2: SMS information LED
- D9: Teach program status LED
- D8: RELAY2 (OUT2) Status LED
- D7: RELAY1 (OUT1) Status LED
- D15: Battery charging status
- D16: Battery charge finished



You must provide an external power source to the device you want to control. No voltage is present at the relay terminals (remember it is just a switch). The relay is normally connected in series with the positive (+) power wire of the device you want to control.

TO USE THE OUTPUTS SAFELY, YOU MUST OBSERVE THE MAXIMUM VOLTAGE AND CURRENT LIMITS QUOTED IN THE MANUAL

GSM-WEEKLY Instructions List:

Default settings

The default settings are, open access mode (Any call to the GSM-WEEKLY will activate it), when activated relay 1 on for 2 seconds, wait time of 2 seconds, relay 2 on for 2 seconds, the default password is 123456.

Programming the GSM-WEEKLY

Fast Teach Button:

On the board version of GSM-WEEKLY there is a “ Fast Teach Button”.When you want to do the fast program to program your number to the WHL list to GSM-WEEKLY device, you can press the button until the LED light, then use your phone to dial the number of GSM-WEEKLY, when pickup the calling,the Teach LED would flash,reject the calling and save the phone number into the device.

The GSM-WEEKLY is programmed by sending it SMS text commands from a mobile phone, these are sent to the telephone number of the SIM card installed in the GSM-WEEKLY.

The password command must pre-fix all SMS text commands it is recommended the default password be changed.

You also can use the PC program adapter to program the device.

*Remember that all SMS text commands must always be sent in **CAPITAL LETTERS**
DO NOT add spaces or any other characters*

GSM-WEEKLY Programming commands list :

If you are familiar with the commands a quick reference can be found on page 7

#PWD Password

This command must always pre-fix any SMS text commands to the unit using the 6 digits as a password.

The unit comes from the factory with the default password set as 123456 and the following must pre-fix all commands to the unit **#PWD123456**

#CAP Changing the Password

To changing the password of the unit you would use the #CAP Command and to change the password to 121212 you Would send the following SMS text message to the unit.

#PWD123456#CAP121212#CAP121212

the #CAP121212 is repeated twice as confirmation of the new password.

You will receive the following confirmation from the unit **PWD SETUP OK**

#WHL White List

This is the command that you will use for adding the authorized telephone numbers that can access the system.

The system comes in the open access mode which allows any telephone number to access the system and once the system has been installed and the white list programmed you would

secure the system using the **#ACM** command.

To add a number to the white list, you would send the following SMS text message to the unit assuming the number would be 04759309384.

#PWD123456#WHL001=04759309384

You will receive the following confirmation from the unit

#WHL001 SET TO 04759309384 OK

This is the first number in the white list and number 2 is sent as #WHL002=and so on up to a maximum of 100 numbers, number 100 would be **WHL100=**

If the you set more than 100 numbers,you will receive the warning message:

Maximum WHL number exceeded,please less than 100

- **Checking the number is the white list**

To check the number in a position on the white list, for example position 01 you would send the following SMS text message to the unit

#PWD123456#WHL01?

You will receive the following confirmation from the unit

WHL01 IS 7827829595 OK

- **Erasing a number is the white list**

To erase a number in the white list you would send the following S.M.S message to the unit.

#PWD123456#WHL02=0000

You will receive the following confirmation from the unit

WHL02 SET TO 0000 OK

- **Erasing all the number in the White list**

To erase all the numbers in the white list you would send the following S.M.S text message to the unit

#PWD123456#WHLDALL

You will receive the following confirmation from the unit:

DELETE ALL OK

#ACM Security Access Mode

- **#PWD123456#ACM=ON**

This command enables access security mode so only the numbers programmed into the white list can access the system and you would send the following SMS text message to the unit, You will receive the confirmation from the unit to confirm the security access mode is on.

ACM SET TO ON

- **#PWD123456#ACM=OFF (The 0 is zero not the letter O)**

This command is used to turn off the security access mode you would send the following SMS text message to the unit, You will receive the following confirmation from the unit

ACM SET TO OFF

confirming the security access mode is switched off and open access mode is activated.At the open access mode,any phone number can dial to control the device or send the SMS to control the device (Of course,that should have the right password)

- **Check the ACM Status**

#PWD123456#ACM?

This command is used to check the ACM Status, you will receive the following confirmation from the unit

ACM IS OFF or **ACM IS ON**

#RERN Enables the administrator to receive the alert SMS

This is the command that allows you to enable, disable and check the status of the administrator list, these are the number that will receive system alerts SMS. In the first 8 numbers of the WHL numbers list ,from WHL01 to WHL08, that is administrator numbers, To allow the first 4 administrators in the Administrator List to receive system alerts SMS only ,you would send the follow SMS text command to the unit.

#PWD123456#RERN=11110000:PWA=ON,REYA=ON,SAWA=ON,OUTA=ON,CSQA=ON

Where 1 is a number enabled for the first 4 positions in the administrator list ,and 0 is a number disabled for the last 4 positions in the list.

You will receive the following confirmation from the unit

RERN IS SETUP TO 11110000:PWA=ON,REYA=ON,SAWA=ON,OUTA=ON,CSQA=ON

and the first four administrator numbers in the list the receive SMS text alerts

PWA=ON : When power is changed, will send the alert message

REYA=ON : When use the RLY to change the relay status,would send the alert message

SAWA=ON : SMW relay status change would send the alert message

OUTA=ON: When the out1 or out2 status is changed,then would send the alert message

CSQA=ON:When the CSQ is lower than a configured data,then would send the alert message

To check the status of the RERN list you would send the following S.M.S message to the unit

#PWD123456#RERN?

You will receive the following similar confirmation from the unit

RERN: 11110000:PWA=ON,REYA=ON,SAWA=ON,OUTA=ON,CSQA=ON

CSQ ALERT DATA SETUP:

#PWD123456#CSQA=19

When the CSQ is lower than the Configed data,then would send the alert SMS:

“ **GSM SIGNAL LOWER THAN 19,PLEASE CHECK IT** ”

INPUT ALARM: when the alarm input is shorted with GND,then would trigger the alarm

Setup the alarm SMS text:

#PWD123456#UDI1:xxxxxx,UDI2:xxxxxx

UDI1 is for alarm input shorted to GND and UDI2 is for alarm input opened to GND

ALARM Text inquiry:

#PWD123456#UDI?

ALARM enable and disable for alarm input shorted and alarm input opened

#PWD123456#ALARM-IN1=ON:2,ALARM-IN2=OFF

ALARM-IN1 is for alarm input shorted, ALARM-IN2 is for alarm input opened

Device ID 设置指令:

#PWD123456#DEVICE-ID:LAMP-GATE-OUTSIDE

Reply: **DEVICE-ID:LAMP-GATE-OUTSIDE OKAY**

OUT 1 and OUT2 Status change ALERT TEXT

#PWD123456#OUT1-ON-TEXT:xxx

#PWD123456#OUT1-OFF-TEXT:xxx
#PWD123456#OUT2-ON-TEXT:xxx
#PWD123456#OUT2-OFF-TEXT:xxx

When the alarm is triggered, the enabled WHL number will receive the alarm message for example: **DEVICE-ID*RLY1=ON*PHONE:1323242*RELAY=ON*xxx**

POWER CHANGE ALERT:

“NORMAL POWER SUPPLY WORKING”

“BACKUP BATTERY POWER SUPPLY WORKING”

#GOT Relay ON time

This is the command that allows you to reset the default ON time of relays.

To change the default value, you can send the following text command by SMS text message specifying the number of seconds the relay should stay on when it is called.

It is possible to latch each relay for up to a maximum of 65,535 seconds.

To set relay 1 to switch on for 15 minutes each time the unit is called, the following SMS text message is sent to the unit.

#PWD123456#GOT1=00900

Where 1 indicates relay number 1 and 00900 is the relay on time in seconds, this should be entered in 5 digit format as Show. You will receive the following similar confirmation from the unit

GOT1 DELAY TIME SET TO 0900S

To set relay 2 to switch on for 10 minutes each time the unit is called, the following SMS command is sent to the unit.

#PWD123456#GOT2=00600

Where 2 indicates relay number 2 and 00600 is the relay on time in seconds, this should be entered in 5 digit format as shown .You will receive the following similar confirmation from the unit

GOT2 DELAY TIME SET TO 0600S

#GOTS

This is the command that allows you to set the delay time between Relay 1 switching off and Relay 2 switching on. To set the delay time between relay 1 switching on and 2 switching on by 5 seconds, you send the following command by SMS text message to the unit. If

GOTS=0,then relay2 would not work,only relay1 work.

#PWD123456#GOTS=00005

Where 00005 is the delay time in seconds and should be entered in 5 digit format as shown, You will receive the following similar confirmation from the unit

GOTS DELAY TIME SET TO 05S

#GOT?

To check the relay on and delay times you would send the following S.M.S text message to the unit

#PWD123456#GOT?

You will receive the following similar confirmation from the unit.

GOT1=0900,GOT2=0600,GOTS=05

#MODE Relay Operation Mode SETUP

#PWD123456#RELAY1=MODE0 or #PWD123456#RELAY2=MODE0
Acknowledge: RELAY1 SET TO MODE0 or RELAY2 SET TO MODE0
#PWD123456#RELAY1=MODE1 or #PWD123456#RELAY2=MODE1
Acknowledge: RELAY1 SET TO MODE1 or RELAY2 SET TO MODE1

If setup to MODE0, that is Momentary pulse mode, when you call the SIM card number, device will toggle the relay and delay a GOT timer, then the relay will back the previous status.

If setup to MODE1, that is Ratchet relay mode, when you call the SIM card number, device will switch to the other status ON or OFF, and when you call again, it will switch the status again.

Only When you setup up both RELAY1 and RELAY2 to MODE1, then when you phone call the device, RELAY1 and RELAY would be switched ON or OFF at the same time.

Only When you setup up both RELAY1 and RELAY2 to MODE0, then when you phone call the device, RELAY1 and RELAY would be toggled to ON or OFF with the GOT1, GOT2 and GOTS parameters.

#PWD123456#MODE?

You will receive the following similar confirmation from the unit.

RELAY1 working at MODE1, RELAY2 working at MODE1

#RLY Temporary latching of output relays

This command allows the temporarily switch on the Relays for up to 65,000 seconds and receive confirmation SMS text alerts when the Relays switch on and off

This command does not affect the #GOT1 or #GOT2 settings

- To activate relay 1 for 60 seconds you would send the following SMS text message to the unit

#PWD123456#RLY1=0005

Where 1 indicates the relay number and 0005 is the time in seconds and should be entered in a 5 digit format as shown

The administrator number will receive the following confirmation text message from the unit

#RLY1-ON: 05

when the relay 1 switches on, the administrator number will receive the following message:

LAMP-GATE-OUTSIDE*RLY1=ON*PHONE:1122334455*OUT1_ON

After 5 seconds the relay switches off:

LAMP-GATE-OUTSIDE*RLY1=OFF*PHONE:PC*RELAY1=OFF*OUT1_OFF

The confirmation SMS text messages are only sent to the administrators who are active in the #RERN list

- To switch on relay 2 for 360 seconds and the administrator number would send the following SMS text message to the unit

#PWD123456#RLY2=00360

Where 2 indicates relay 2 and 03600 is the on time in seconds, this should be entered in a 5 digit format as shown

The administrator number will receive the following confirmation from the unit

#RLY2-ON: 00360

when relay 2 switches on, the administrator number will receive the following confirmation

LAMP-GATE-OUTSIDE*RLY2=ON*PHONE:1122334455*OUT2_ON

when the relay switches off

LAMP-GATE-OUTSIDE*RLY2=OFF*PHONE:PC*RELAY2=OFF*OUT2_OFF

The confirmation SMS text messages are only sent to the administrators who are active in the #RERN list

#RLOP Switching Relay 1 and Relay 2 permanently on and off

It is possible to switch both relays either on or off using the #RLOP commands

To switch Relay 1 permanently on you would send the following SMS text message to the unit.

#PWD123456#RLOP1=ON or OFF (RLOP2 is the same command)

You will receive the following confirmation from the unit

RLOP1 ON OK when the relay switches on,also the enabled WHL number will receive:

LAMP-GATE-OUTSIDE*RLOP1=ON*PHONE:1122334455*RELAY1=ON*OUT1_ON

RLOP1 OFF OK When the relay switches off,also the enabled WHL number will receive:

LAMP-GATE-OUTSIDE*RLOP1=OFF*PHONE:PC*RELAY1=OFF*OUT1_OFF

The confirmation SMS text messages are only sent to the administrators who are active in the #RERN list

#RELAY? Checking the status of the relays

To check the status of the relays you would send the following SMS text message to the unit

#PWD123456#RELAY?

You will receive the following similar confirmation from the unit

RLY1=OFF-RLOP,RLY2=ON-RLOP

← Below command is for Weekly automatically running setup →

#SMW Schedule Relay working with Weekly timers

This is the command that allows you to program the relays to operate at certain times over a **Weekly working** period. (if you want to order the **Daily working** products,please refer to our GSM-AUTO model)

Note: The time section parameters must be entered in weekly format. You can program up to time sections for each Relay (Totally has two Relay on board)

#PWD123456#SMW=WEEKDAY(SS,MM,HH),TTTTT,F,R

WEEKDAY is from 1 to 7 (Monday to sunday),Can setup multiple day in one command

SS is a 2 digits value in seconds

MM is a 2 digits value in minutes

HH is a 2 digits value in hours

TTTTT is a 5 digits value in seconds, this is the amount of time the relays switch on for

F is the time Section number **0-F (Totally has 16 sections)**

R is the Relay number **1** or **2**

For example: To program the NO.0 Section for relay 1 to switch on for 30minutes at 9.00 PM on Saturday and Sunday,then you would send the following SMS text message to the unit

#PWD123456#SMW=67(21,00,00),300,0,1

You will receive the following confirmation from the unit

SMW=67(21,00,00),300,0,1

Fox example: To program NO.F Section for the output relay 2 to turn on for 10 seconds at 6:30 am on from Monday to Friday, you would send the following SMS text message to the unit

#PWD123456#SMW=12345(06,30,00),10,F,2

#SMW? Check the SMW setting

This command is used to check the inside SMW setting timer after setup.

You will receive the following two confirmation message from the unit

SMW00=67,21,00,00,00300,0,1

SMW01=7,20,37,00,00005,1,1

SMW02=267,20,39,00,00005,2,2

SMW=ON Start the SMW working mode

This command is used to start to the SMW working, when the inside TEST clock is reaching at the setted time, then the specified relay would start to work.

SMW has two type working mode: OTP and REPEAT.

OTP is working temporarily on for one time, and then the would be reset
REPEAT is working permanently when the WEEKDAY and the time is reached

#PWD123456#SMWON=2:ON:OTP

This command is used to start the SMW Timer Section NO.2 ,Only can send one section and only work one time.

If the TEST is already setted, then will receive the confirmation SMS message

SMWON=2:ON:OTP OKAY

If the TEST has not to be setted, then you will receive the check SMS message:

Please set the TEST inside clock first before Start the SMWON

Then the SMS will work only on time with the near timer, and later would need to On it again when need to work

#PWD123456#SMWON=0123456:ON:REPEAT

If the TEST is already setted, then will receive the confirmation SMS message

SMWON=0123456:ON:REPEAT OKAY

Then the SMW will work automatically when with the SMW timer section inside the device.

This command is used to start the SMW Timer Section NO.0, to NO.6, Every time section will work automatically when the inside clock is reaching this setting time section.

For example, we setted: #PWD123456#SMW=5(00,01,20),15,0,1

When the SMW timer relay start to work, then the device would send the alert message:

SMWA1 OUT1 START:00,01,20

When the SMW timer relay is timer out and then stop to work, then the device would send the alert message:

SMWA1 OUT2 END:00,01,35

SMWA1 also would be different for different SMW time Section number.

#PWD123456#SMWON?

When the SMW relay is not working, then the device would send the confirm message:

SMWON 7:ON:OTP,0123456:ON:REPEAT

#PWD123456#SMWON=OFF

Will stop the SMW and relay working immediately

then will receive the confirmation SMS message:

SMWON-OTP=OFF,REPEAT=OFF OKAY

Then if we use the:

#PWD123456#SMWON?

Reply message would be : **SMWON 0:OFF:OTP-123456:OFF:REPEAT**

Or **SMWON 0:ON:OTP-123456:ON:REPEAT**

Note: Once this function has activated, the relays will operate automatically according to the programmed time sections.

#TSET Setting the Timing Working Clock

To set the time, you send the following SMS command to the unit. And the time must enter in 24 Hour format.

Text Command to be sent would be

#TSET=YEAR:MONTH:DAY:HH,MM,SS

SS is a 2 digits value: Seconds

MM is a 2 digits value: Minutes

HH is a 2 digits value: hours

For example: To program the time 2014,07,04- 8.00 am, you would send the following SMS text message to the unit:

#PWD123456#TSET=2014:07:04:08:00:00

You will receive the following confirmation from the unit

TSET=14:07:04:00:01:10

To check the time:

To check the time you would send the following S.M.S text message to the unit

#PWD123456#TSET?

You will receive the following similar confirmation from the unit

TSET=14:07:04:00:01:34

Note: The Time has to be set to use the #SMW command

GSM-WEEKLY-RESET Resetting the unit

To reset the unit you would send the following S.M.S text message to the unit

GSM-WEEKLY-RESET

You will receive the following similar confirmation from the unit

GSM-WEEKLY-RESET OKAY

Then the following parameters would be reset to:

ACM=OFF,RELAY1=MODE0:0005,RELAY2=MODE0:0005,GOTS:0005,SMW=OFF,TEST=00:00:00

Also the password is Reseted to 123456

Config the RELAY Status when power Reset again

#PWD123456#POWER-RESET=11 (1 means ON ,0 means OFF when power on)

#PWD123456#POWER-SAVE

#STATUS? Check system status

This command is useful to check the system parameters and the inside clock.

#PWD123456#STATUS?

You will receive the following similar confirmation from the unit

ACM=ON,RELAY1=MODE0:10,RELAY2=MODE0:10,GOTS:10,RLY1=OFF-RLOP,RLY2=OFF-POWER,RERN:10000000:PWA=ON,REYA=ON,SAWA=ON,OUTA=ON,CSQA=ON,SMW=ON,TEST:00:58:18

#CSQ Check GSM signal strength

This command is useful to see what the GSM network signal strength is at the location of the unit. You would send the following SMS text message to the unit

#PWD123456#CSQ?

You will receive the following similar confirmation from the unit

CSQ IS 19

with signal quality in range 0 to 31, minimum signal strength of 5 is required, if it is below 5 then a change of network or fitting an external antenna is advised.

SMS TEXT COMMANDS Quick Reference Guide

Password #PWDXXXXXX (6 digits) This command must always pre-fix any SMS text commands sent to the unit.

Only use the LAST 8 digits of the telephone numbers to be entered

FUNCTION	COMMAND	FORMAT
Changing te Password	#CAP	#PWD123456#CAP121212#CAP121212 Current password > new password twice
White List	#WHL	#PWD123456#WHL001=564556678 Position > telephone number (last 8 digits)
Security Access Mode	#ACM	#PWD123456#ACM=ON #PWD123456#ACM=OFF
Check signal strength	#CSQ	#PWD123456#CSQ?
Relay ON time	#GOT	#PWD123456#GOT1=00900 #PWD123456#GOT2=00900
Delay time between Relay 1 switching off and Relay 2 switching on	#GOTS	#PWD123456#GOTS=00005
Temporary latching of output relays	#RLY	#PWD123456#RLY1=00060
Switching Relay 1 and Relay 2 permanently on and off	#RLOP	#PWD123456#RLOP1=ON #PWD123456#RLOP1=OFF #PWD123456#RLOP2=ON #PWD123456#RLOP2=OFF
Setting the time	#TSET	#TSET=SS,MM,HH SS=Seconds, MM=Minutes, HH=Hours all 2 digit values

Relay 24 hour timers	#SMW	#SMW=SS,MM,HH,TTTT,F,R; SS=Seconds, MM=Minutes, HH=Hours, TTTT=Relay on time in seconds (5 digits), F= time Section number 1 – 8, R= Relay number 1 or 2
Resetting the unit	GSM-WEEKLY-RESET	#REST#121212 Reset to factory default settings including password

Examples for SMW function setting steps:

1. Setup your phone number into the WHL number listing: xxxxxxxx is your mobile phone number

#PWD123456#WHL01=xxxxxxx

2. Setup the SMS timer working scheduled list: (totally, we can setup 16 sections from 0 to F)

For example, we want to setup on Sunday, Relay1 will ON automatically from 08:00 to 08:05 { 5second pulse }, then the command is : #PWD123456#SMW=7(08,00,00),5,0,1

This command means: on 7 (sunday) will work from 08:00:00 for 5 seconds at Relay1

Also the Following Lists are the samples setting with the command listed:

Monday: Relay1 will ON automatically from 10:00 to 10:05 { 5second pulse }
 Tuesday: Relay1 will ON automatically from 05:00 to 05:05 { 5second pulse }
 Wednesday: Relay1 will ON automatically from 12:00 to 12:05 { 5second pulse }
 Thursday: Relay1 will ON automatically from 13:00 to 13:05 { 5second pulse }
 Friday: Relay1 will ON automatically from 09:00 to 09:05 { 5second pulse }
 Saturday: Relay1 will ON automatically from 11:00 to 11:05 { 5second pulse }

Then the following SMS command would need to be sent:

#PWD123456#SMW=7(08,00,00),5,0,1
 #PWD123456#SMW=1(10,00,00),5,1,1
 #PWD123456#SMW=2(05,00,00),5,2,1
 #PWD123456#SMW=3(12,00,00),5,3,1
 #PWD123456#SMW=4(13,00,00),5,4,1
 #PWD123456#SMW=5(09,00,00),5,5,1
 #PWD123456#SMW=6(11,00,00),5,6,1

(of course, for test fastly, after you understand the command, you can setup a very close start timing point)

(You also can setup to start the Relay2)

3. Setup the timer clock inside the device: that is your clock, must need to setup, then SMW can work

#PWD123456#TSET=2014:06:29:07:59:02

4. Start the SMW: We can start the SMW with OPT or REPEAT mode.

OTP that means this SMW only working one time, then would be reseted.

REPEAT that means, every time when arrive at the scheduled date and time, then would working

#PWD123456#SMWON=0123456:ON:REPEAT

This command means time section: 0,1,2,3,4,5,6 would start to be working REPEAT. Totally you can setup start 16 sections: from 0 to F. please don't mistake this with week, this is section number, so it maybe:

#PWD123456#SMWON=0123456789ABCDEF:ON:REPEAT

1. You can check what sections you have time section are starting:
#PWD123456#SMWON?
Relay would be : SMWON-7:ON:OTP,0123456:ON:REPEAT
2. Every timer if you power off the device,then you need to do the clock preset , ie: TSET command to adjust the clock
3. If you want to inquiry all the SMW timer section inside the device,then you would need to use the PC to send the command through the program adapter (because the SMS can't receive many text)
#PWD123456#SMW?

This brochure provides an overview of the products and services of WEFU GSM Modules, For further information and queries kindly contact:

Email: coinco_cn@yahoo.com.cn
Web: www.waferstar.com
Tel: 0086-21-51870528

Also accessible via our online MSN service: frank_ic2001@hotmail.com

Copyright 2012, WEFU GSM